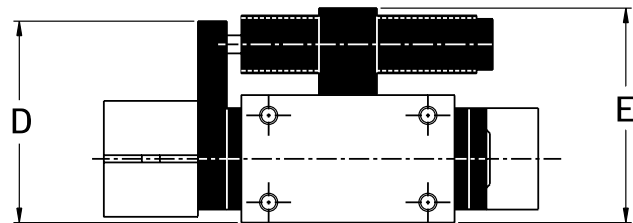
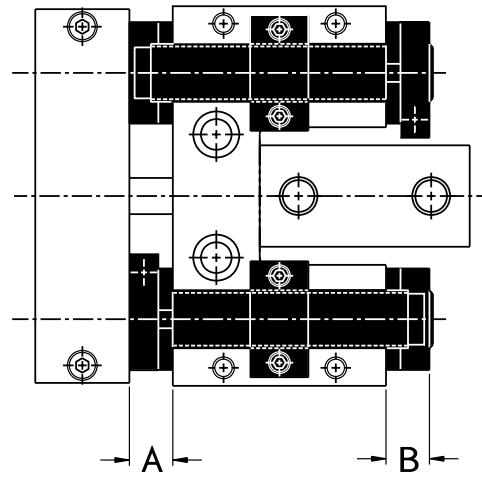
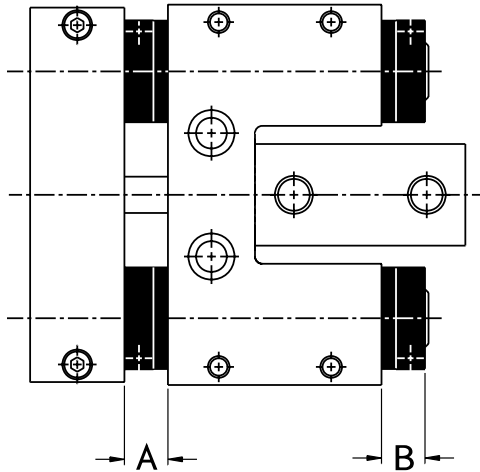


**SHOCK ABSORBER OPTION**

**EXTERNAL BUMPERS AND STOP COLLARS OPTION**



EXTERNAL URETHANE BUMPERS WITH STOP COLLARS PROVIDE STROKE ADJUSTMENT ON RETRACTION (OPTION "BR") ON EXTENSION (OPTION "BE"), OR IN BOTH DIRECTIONS (OPTION "BB"\*).

NOTE: THESE OPTIONS EFFECT SOME BASIC DIMENSIONS. SEE CHART BELOW.

\*Option "BB" is a combination of options "BR" and "BE."

ACE CONTROLS SHOCK ABSORBERS AND EXTERNAL URETHANE BUMPERS WITH STOP COLLARS PROVIDE DECELERATION AND STROKE ADJUSTMENT ON EXTENSION (OPTION "SE"), ON RETRACTION (OPTION "SR") OR IN BOTH DIRECTIONS (OPTION "SB"\*). OPTION "SE" AND "SR" EACH CONSISTS OF A SHOCK ABSORBER, MOUNTING BRACKET, STRIKER PLATE AND BUMPER ON ONE END OF THE POWERED SLIDE. A BUMPER AND STOP COLLAR ARE INCLUDED ON THE SAME END BUT MOUNTED ON THE OPPOSITE GUIDE ROD.

SEE PAGE 7 FOR SHOCK ABSORBER SELECTION.

NOTE: THESE OPTIONS EFFECT SOME BASIC DIMENSIONS. SEE CHART BELOW.

\*Option "SB" is a combination of options "SR" and "SE."

OPTIONS	BR & SR		BE & SE		BB & SB		SR, SE & SB	
Bore Size	DIMENSIONS							
	A	B	A	B	A	B	D	E
1/2	5/8	0	0	5/8	5/8	5/8	2 1/8	2 1/8
3/4	5/8	0	0	5/8	5/8	5/8	2 3/16	2 1/4
1 1/8	3/4	0	0	3/4	3/4	3/4	2 63/64	3 13/64
1 1/2	3/4	0	0	3/4	3/4	3/4	3 31/64	3 45/64