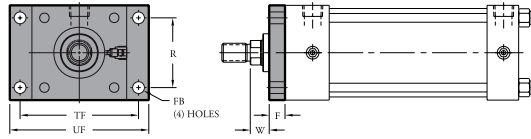
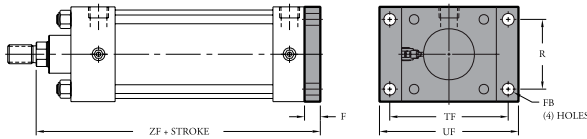


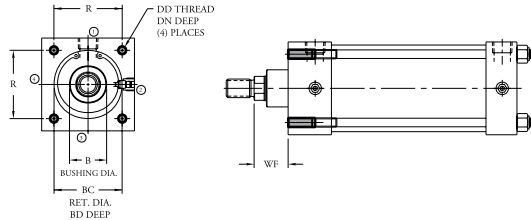
FRONT FLANGE MOUNT (NFPA MFI)



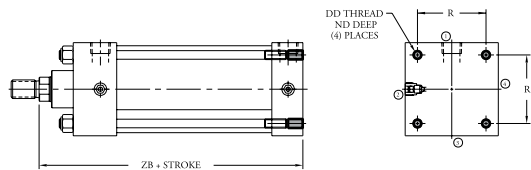
REAR FLANGE MOUNT (NFPA MF2)



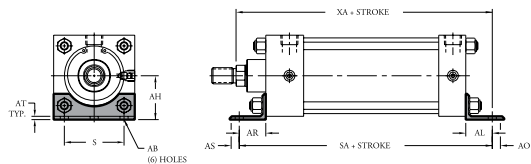
FRONT FACE MOUNT (FC1)



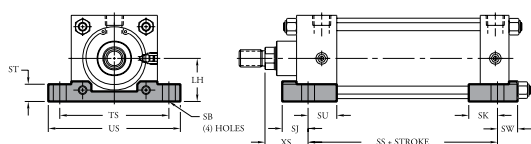
REAR FACE MOUNT (FC2)



ANGLE MOUNTS (NFPA MS1)



SIDE LUG MOUNTS (NFPA MS2)



NFPA MF1 AND MF2

DIMENSION	CYLINDER BORE						
	1 1/2	2	2 1/2	3 1/4	4	5	6
ROD DIA.	5/8 1	5/8 1	5/8 1	1 1 13/8	1 1 13/8	1 1 13/8	1 1 13/8 1 13/8
F	3/8	3/8	3/8	5/8	5/8	5/8	3/4
FB	5/16	3/8	3/8	7/16	7/16	9/16	9/16
R	1.43	1.84	2.19	2.76	3.32	4.10	4.88
TF	2 3/4	3 3/8	3 7/8	4 11/16	5 7/16	6 5/8	7 5/8
UF	3 3/8	4 1/8	4 5/8	5 1/2	6 1/4	7 3/8	8 5/8
W	5/8 1	5/8 1	5/8 1	3/4 1	3/4 1	3/4 1	7/8 1 13/8
ZF	5 5/8	5 5/8	5 5/8	6 1/4	6 1/2	6 1/2	6 3/4 7 3/8

FC1

DIMENSION	CYLINDER BORE							
	1 1/2	2	2 1/2	3 1/4	4	5	6	8
ROD DIA.	5/8 1	5/8 1	5/8 1	1 1 13/8	1 1 13/8	1 1 13/8	1 1 13/8 1 13/8	1 1 13/8 1 13/8
B	1.124	1.499	1.124	1.499	1.499	1.499	1.999	2.374
BC	1 3/8 N/A	2 1/8	2 1/8	2 3/4	2 3/4	2 3/4	3 1/4	3 1/4
BD	1/16	3/32	3/32	5/32	5/32	5/32	3/16	3/16
DD	1/4-28	5/16-24	5/16-24	3/8-24	3/8-24	1/2-20	1/2-20	5/8-18
DN	3/4 1 13/8	3/4	3/4	7/8	7/8	7/8	1	1
R	1.43	1.84	2.19	2.76	3.32	4.10	4.88	6.44
WF	1 1	1 1 13/8	1 1 13/8	1 1 13/8 1 13/8	1 1 13/8 1 13/8	1 1 13/8 1 13/8	1 1 13/8 1 13/8	1 1 13/8 1 13/8

*Includes 3/8 unthreaded cover plate

FC2

DIMENSION	CYLINDER BORE							
	1 1/2	2	2 1/2	3 1/4	4	5	6	8
ROD DIA.	5/8 1	5/8 1	5/8 1	1 1 13/8	1 1 13/8	1 1 13/8	1 1 13/8 1 13/8	1 1 13/8 1 13/8
DD	1/4-28	5/16-24	5/16-24	3/8-24	3/8-24	1/2-20	1/2-20	5/8-18
ND	1/2	1/2	1/2	5/8	5/8	5/8	3/4	3/4
R	1.43	1.84	2.19	2.76	3.32	4.10	4.88	6.44
ZB	4 5/8 5	4 5/8 5	4 5/8 5	4 5/8 5 5/8 5 5/8	5 5/8 5 5/8 5 5/8	5 5/8 5 5/8 5 5/8	6 3/8 6 3/8 6 3/8	6 3/4 6 3/4 6 3/4

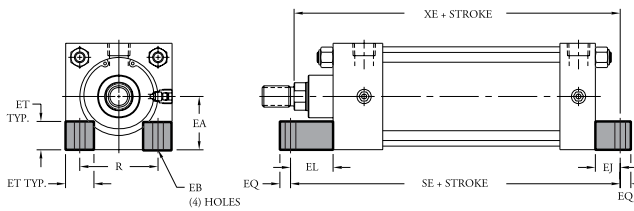
NFPA MS1

DIMENSION	CYLINDER BORE							
	1 1/2	2	2 1/2	3 1/4	4	5	6	8
ROD DIA.	5/8 1	5/8 1	5/8 1	1 1 13/8	1 1 13/8	1 1 13/8	1 1 13/8 1 13/8	1 1 13/8 1 13/8
AB	7/16	7/16	7/16	9/16	9/16	11/16	13/16	13/16
AH	13/16	17/16	1 5/8	1 15/16	2 1/4	2 3/4	3 1/4	4 1/4
AL	1	1	1	1 1/4	1 1/4	1 3/8	1 3/8	1 13/16
AO	3/8	3/8	3/8	1/2	1/2	5/8	5/8	11/16
AR	1 3/8	1 3/8	1 3/8	1 7/8	1 7/8	2	2 1/8	1 13/16
AS	3/8	3/8	3/8	5/8	5/8	1	7/8	11/16
AT	1/8	1/8	1/8	3/16	3/16	3/16	3/16	1/4
S	1 1/4	1 3/4	2 1/4	2 3/4	3 1/2	4 1/4	5 1/4	7 1/8
SA	6	6	6 1/8	7 3/8	7 3/8	7 7/8	8 1/2	8 3/4
XA	5 5/8 6	5 5/8 6	5 5/8 6	5 5/8 6 5/8 6 5/8	6 7/8 6 7/8 6 7/8	6 7/8 6 7/8 6 7/8	7 1/4 7 1/4 7 1/4	8 8 1/4 8 1/4 8 3/16

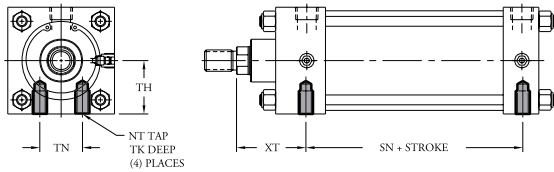
NFPA MS2

DIMENSION	CYLINDER BORE							
	1 1/2	2	2 1/2	3 1/4	4	5	6	8
ROD DIA.	5/8 1	5/8 1	5/8 1	1 1 13/8	1 1 13/8	1 1 13/8	1 1 13/8 1 13/8	1 1 13/8 1 13/8
LH	1	1 1/4	1 1/2	1 7/8	2 1/4	2 3/4	3 1/4	4 1/4
SB	7/16	7/16	7/16	9/16	9/16	13/16	13/16	13/16
SJ	3/4 1 1/8	7/8	7/8	1 1/8	1 1/8	1 7/16	1 7/16	1 11/16
SK	5/8	15/16	15/16	1 1/4	1 1/4	1 9/16	1 9/16	1 9/16
SS	2 7/8	2 7/8	3	3 3/4	3 3/4	3 3/8	3 3/8	3 3/4
ST	1 1/2	1 1/2	1 1/2	3/4	3/4	1	1	1
SU	15/16	15/16	15/16	1 1/4	1 1/4	1 9/16	1 9/16	1 9/16
SW	9/16	3/4	3/4	7/8	1	1 7/16	1 7/16	1 11/16
TS	2 3/4	3 1/4	3 3/4	4 3/4	5 1/2	6 7/8	7 7/8	9 7/8
US	3 1/2	4	4 1/2	5 3/4	6 1/2	8 1/4	9 1/4	11 1/4
XS	1 3/8 1 3/4	1 3/8 1 3/4	1 3/8 1 3/4	1 7/8 2 1/8	1 7/8 2 1/8	2 1/16 2 1/16	2 1/16 2 1/16	2 1/16 2 1/16

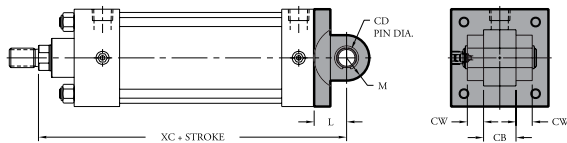
END LUG MOUNTS (NFPA MS7)



SIDE TAPPED MOUNTS (NFPA MS4)

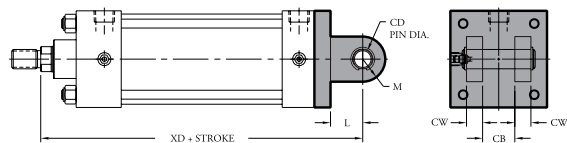


CLEVIS MOUNT (NFPA MP1)



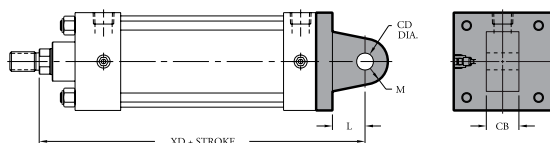
Pivot Pin Included.

CLEVIS MOUNT (NFPA MP2)



Pivot Pin Included.
Not available on 8" bore cylinders.

PIVOT MOUNT (NFPA MP4)



Not available on 8" bore cylinders.

NFPA MS7

DIMENSION	CYLINDER BORE							
	1 1/2	2	2 1/2	3 1/4	4	5	6	8
ROD DIA.	5/8 1	5/8 1	5/8 1	1 1 3/8	1 1 3/8	1 1 3/8	1 3/8 1 3/4	1 3/8 1 3/4
EA	1	1 1/4	1 1/2	1 7/8	2 1/4	2 3/4	3 1/4	4 1/4
EB	5/16	3/8	3/8	7/16	7/16	9/16	9/16	11/16
EJ	3/4 3/4	15/16	1 1/16	7/8	1	1 1/16	1	1 1/8
EL	1 1/8 3/4	1 5/16	1 7/16	1 1/2	1 5/8	1 11/16	1 3/4	1 1/8
EQ	1/4	5/16	5/16	3/8	3/8	1/2	1/2	5/8
ET	9/16	11/16	13/16	1	1 3/16	1 3/8	1 5/8	2 1/16
R	1.43	1.84	2.19	2.76	3.32	4.10	4.88	6.44
SE	5 1/2	5 7/8	6 1/4	6 5/8	6 7/8	7 1/4	7 3/4	7 3/8
XE	5 3/8 5 3/4	5 7/16 5 5/8	5 7/16 6 1/16	6 1/2 6 3/4	6 5/8 6 7/8	6 5/16 7 3/16	7 3/8 7 7/8	7 7/8 8 1/8

NFPA MS4

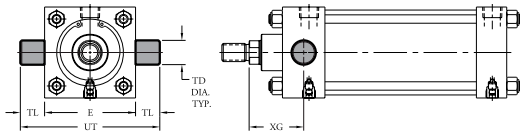
DIMENSION	CYLINDER BORE							
	1 1/2	2	2 1/2	3 1/4	4	5	6	8
ROD DIA.	5/8 1	5/8 1	5/8 1	1 1 3/8	1 1 3/8	1 1 3/8	1 3/8 1 3/4	1 3/8 1 3/4
NT	1/4-20	5/16-18	3/8-16	1/2-13	1/2-13	5/8-11	3/4-10	3/4-10
SN	2 1/4	2 1/4	2 3/8	2 5/8	2 5/8	2 7/8	3 1/4	3 1/4
TH	1	1 1/4	1 1/2	1 7/8	2 1/4	2 3/4	3 1/4	4 1/4
TK	3/8 5/16	1/2	5/8	13/16	13/16	1	1 3/16	1 1/4
TN	5/8	7/8	1 1/4	1 1/2	2 1/16	2 11/16	3 1/4	4 1/2
XT	1 5/16 2 5/16	1 5/16 2 5/16	1 5/16 2 5/16	2 7/16 2 11/16	2 7/16 2 11/16	2 7/16 2 11/16	2 3/16 3 1/16	2 3/16 3 1/16

NFPA MP1, MP2 AND MP4

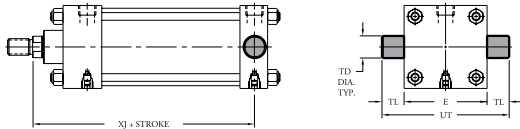
DIMENSION	CYLINDER BORE							
	1 1/2	2	2 1/2	3 1/4	4	5	6	8
ROD DIA.	5/8 1	5/8 1	5/8 1	1 1 3/8	1 1 3/8	1 1 3/8	1 3/8 1 3/4	1 3/8 1 3/4
CB	3/4	3/4	3/4	1 1/4	1 1/4	1 1/4	1 1/2	1 1/2
CD	1/2	1/2	1/2	3/4	3/4	3/4	1	1
CW	1/2	1/2	1/2	5/8	5/8	5/8	3/4	3/4
L	3/4	3/4	3/4	1 1/4	1 1/4	1 1/4	1 1/2	1 1/2
M	5/8	5/8	5/8	7/8	7/8	7/8	1 1/4	1 1/4
XC	5 3/8 5 3/4	5 3/8 5 3/4	5 1/2 5 7/8	6 7/8 7 1/8	6 7/8 7 1/8	7 1/8 7 3/8	8 3/8 8 3/8	8 1/4 8 1/2
XD	5 3/4 6 1/8	5 3/4 6 1/8	5 7/8 6 1/4	7 1/2 7 3/4	7 1/2 7 3/4	7 3/4 8	8 7/8 9 1/8	N/A N/A

Pivot pin is included on MP1 and MP2.
See Application Information for optional pivot pin for MP4.

HEAD TRUNNION MOUNT (NFPA MT1)



CAP TRUNNION MOUNT (NFPA MT2)



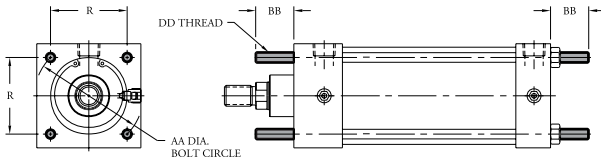
NFPA MT1 AND MT2

DIMENSION	CYLINDER BORE							
	1 1/2	2	2 1/2	3 1/4	4	5	6	8
ROD DIA.	5/8, 1	5/8, 1	5/8, 1	1, 1 1/8	1, 1 1/8	1, 1 3/8	1 3/8, 1 3/4	1 3/8, 1 3/4
E	2	2 1/2	3	3 3/4	4 1/2	5 1/2	6 1/2	8 1/2
TD	1	1	1	1	1	1	1 3/8	1 3/8
TL	1	1	1	1	1	1	1 3/8	1 3/8
UT	4	4 1/2	5	5 3/4	6 1/2	7 1/2	9 1/4	11 1/4
XG	1 3/4, 2 1/8	1 3/4, 2 1/8	1 3/4, 2 1/8	2 1/4, 2 1/2	2 1/4, 2 1/2	2 1/4, 2 1/2	2 5/8, 2 7/8	2 5/8, 2 7/8
XJ	4 7/8, 4 1/2	4 7/8, 4 1/2	4 7/8, 4 1/2	5, 5 1/4	5, 5 1/4	5 1/4, 5 1/2	5 7/8, 6 1/8	6, 6 1/4

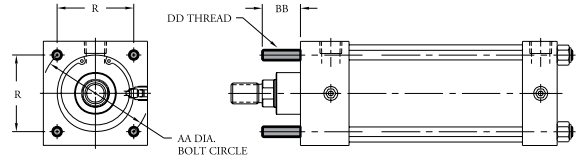
NFPA MX1, MX2 AND MX3

DIMENSION	CYLINDER BORE							
	1 1/2	2	2 1/2	3 1/4	4	5	6	8
AA	2.02	2.6	3.1	3.9	4.7	5.8	6.9	9.1
BB	1	1 1/8	1 1/8	1 3/8	1 3/8	1 13/16	1 13/16	2 5/16
DD	1/4-28	5/16-24	5/16-24	3/8-24	3/8-24	1/2-20	1/2-20	5/8-18
R	1.43	1.84	2.19	2.76	3.32	4.10	4.88	6.44

EXTENDED TIE RODS - FRONT AND REAR (NFPA MX1)



EXTENDED TIE RODS - FRONT (NFPA MX3)



EXTENDED TIE RODS - REAR (NFPA MX2)

