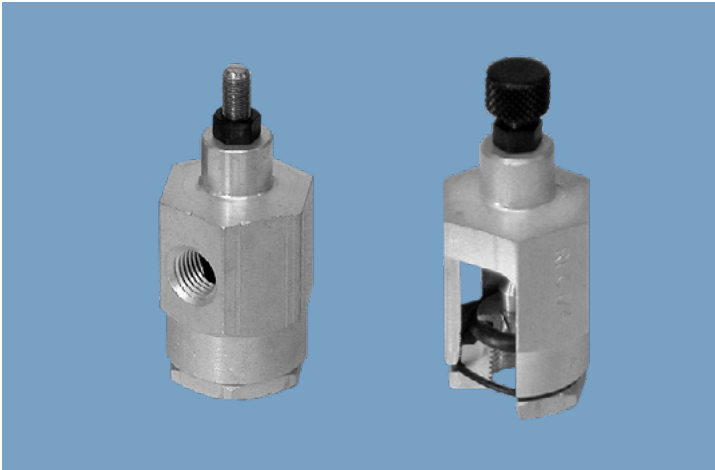


FLOW CONTROLS

FLAIRLINE



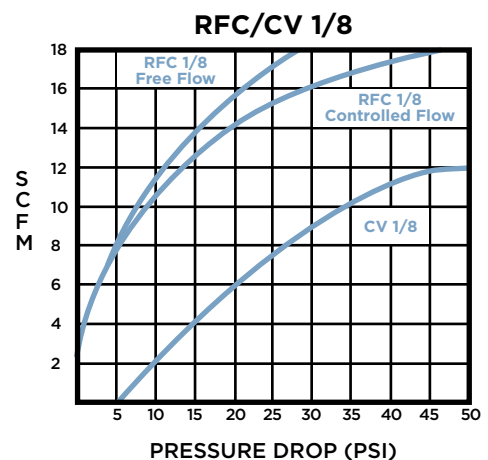
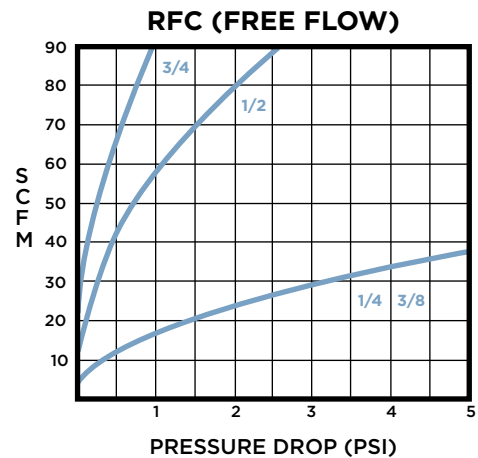
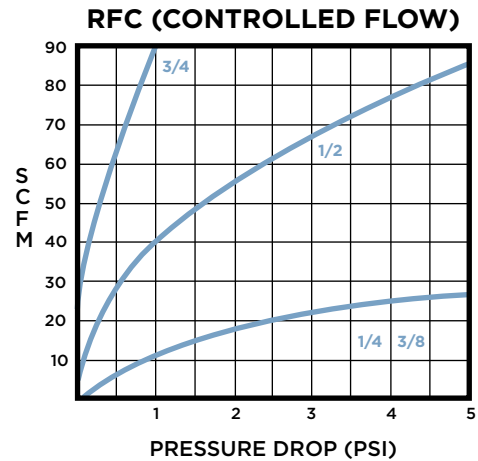
Features

- Permits full free flow in one direction and metered flow in the opposite direction
- Positive sealing (no bubble leakage)
- Last millions of cycles (factory tests to 50 million cycles show no discernible wear)
- Fine adjustment screw threads and compound needle taper provide precise flow control
- Now available with lock and key tamper-resistant capability

Specifications

- Standard NPTF sizes: 1/8", 1/4", 3/4", 1" & 2"
- Operating pressure: 250 psi
- Orifices available for fixed flow control applications
- Operating temperature range: -40° - +225°F
- Standard valve body material: Aluminum
- Standard needle material: Brass
- Standard swivel connector material: Black oxidized steel

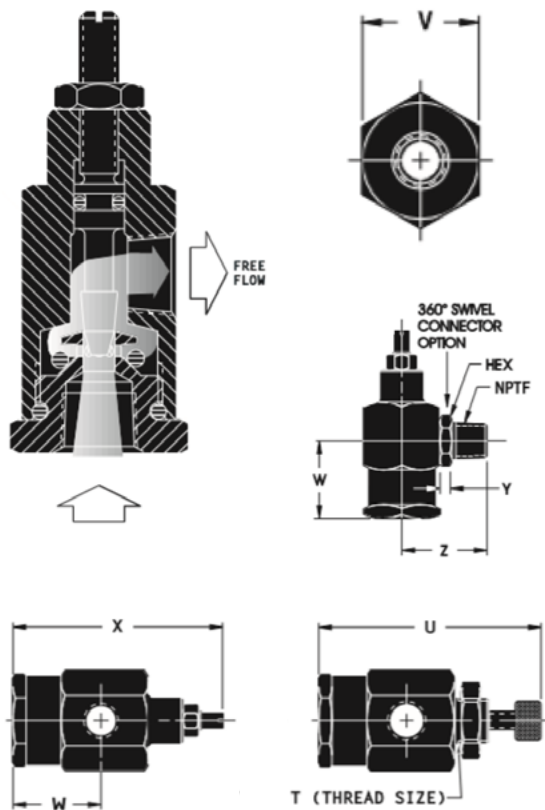
Flow Charts



FLOW CONTROLS

FLAIRLINE

Dimensional Data



Ordering Information

RFC 1/2 K V

PIPE SIZE
1/8
1/4
3/8
1/2
3/4

SEALS	
BUNA-N	Standard
FLOUROCARBON	V

OPTIONS	
KNOB	K
PANEL MOUNT	PM
KNOB AND PANEL MOUNT	PK
SWIVEL	S
SWIVEL AND KNOB	SK
TAMPER PROOF	T

RIGHT ANGLE FLOW CONTROL
Model RFC (NPTF)

NPTF	T	U	V	W	X	Y	Z	HEX
1/8	1/8 - 20	2 7/16	3/4	7/8	2 1/8	.13	.91	1/2
1/4	5/8 - 18	3 3/16	1 1/4	1 1/4	3	.15	1.34	3/4
3/8	5/8 - 18	3 3/16	1 1/4	1 1/4	3	.15	1.34	3/4
1/2			1 5/8	1 5/8	3 3/4	.28	1.84	7/8
3/4			2	1 1/4	3 3/4			