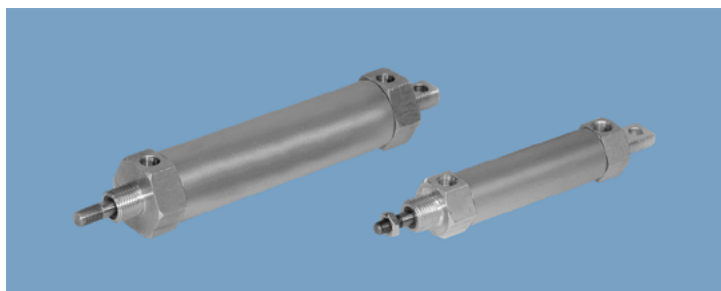


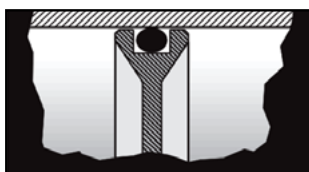
MINIATURE (DIGIT-AIR) CYLINDERS

FLAIRLINE

Series MTM, MSM, MTMR, MSMR, FTM, FSM, FTMR & FSMR

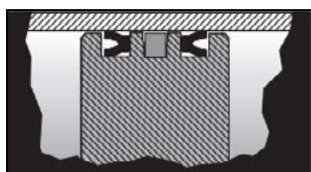


AVAILABLE IN TWO PISTON TYPES



O TYPE

For FTM, FSM, FTMR & FSMR



M TYPE

For MTM, MSM, MTMR & MSMR

Information

Flairline's Digit-Air models are small bore cylinders that reduce replacement costs, maintenance labor, and machine downtime.

- Standard Construction: anodized aluminum barrels, aluminum heads and caps, O type piston, bronze rod bearings, and stainless steel rods
- FSM/MSM models for head to nose mounting
- FTM/MTM models for cap end universal swivel mounting
- FTMR/MTMR and FSMR/MSMR models for harsh working conditions
- MSM/MTM/MTMR feature magnetic piston cylinders with hall/reed effect switches.

Specifications

- Maximum Pressure:
 - Pneumatic: 200 psi
 - Hydraulic: 200 psi
- Operating Temperature:
 - 0-200°F (Buna Seals)
 - 18-93°C (Buna Seals)
- Hard anodized aluminum barrels
- Aluminum heads and end caps
- Stainless steel rods
- Bronze rod bearings

Features

- Standard Bore Sizes: $\frac{1}{2}$, $\frac{3}{4}$, $1\frac{1}{8}$
- Stroke Sizes: $\frac{1}{2}$ " to 36"
- Cushions available:
 - MTM/MSM: Either/both ends
 - MTMR/MSMR: Either/both ends
 - FTM/FSM: Either/both ends
 - FTMR/FSMR: Normally extended: head end only. Normally retracted: cap end only

FLAIRLINE WARRANTY

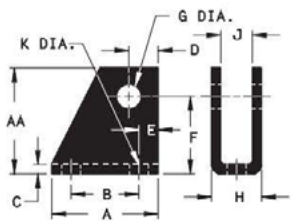
Flairline warrants each product against defects in material and workmanship for a period of one year from the date of manufacturing providing its use was in accordance with Flairline recommendations. If the product fails to perform as warranted, Flairline will, at its option, repair or replace the product free of charge. The company will not be liable for incidental or consequential damages. We make no other warranty, expressed or implied, including warranties of merchantability or fitness for a particular purpose.

MINIATURE (DIGIT-AIR) CYLINDERS

FLAIRLINE

Series MTM, MSM, MTMR, MSMR, FTM, FSM, FTMR & FSMR

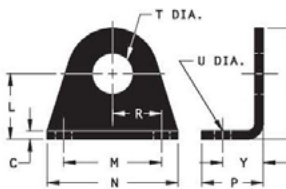
Series FTM, FSM, MTM, MSM, FTMR, FSMR, MTMR & MSMR Mounting:



SWIVEL BRACKET

BORE SIZE	NUMBER
1/2, 3/4	6/4 - 34
1 1/8	9 - 34

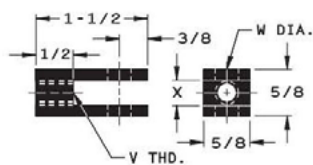
Connecting Pin Included.



FOOT BRACKET

BORE SIZE	NUMBER
1/2, 3/4	6/4 - 32
1 1/8	9 - 32

Mounting Nut Included.



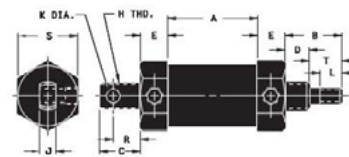
ROD CLEVIS

BORE SIZE	NUMBER
1/2, 3/4	6/4 - 35
1 1/8	9 - 35

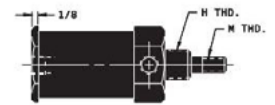
Connecting Pin Included.

BORE SIZE	1/2, 3/4	1 1/8
A	1 3/8	1 3/8
AA	1 1/8	1 3/8
B	7/8	7/8
C	1/8	1/8
D	3/8	3/8
E	1/4	1/4
F	3/4	1
G	1/4	5/16
H	21/32	21/32
J	13/32	13/32
K	1/4	1/4
L	3/4	1
M	1	1 1/2
N	1 3/8	2
P	3/4	15/16
R	1/2	3/4
S	1 1/4	1 11/16
T	5/8	5/8
U	3/16	1/4
V	1/4 - 28	5/16 - 24
W	1/4	5/16
X	11/32	11/32
Y	1/2	5/8

Dimensions



SERIES MTM/MTMR SWIVEL MOUNT CYLINDERS



SERIES MSM/MSMR NOSE MOUNT CYLINDERS

BORE SIZE	1/2	3/4	1 1/8
A	2 1/16	1 9/16	1 9/16
B	1 1/4	1 1/4	1 5/16
C	13/16	13/16	15/16
D	1/2	1/2	9/16
E	9/16	9/16	5/8
H	1/2 - 20	5/8 - 18	5/8 - 18
J	1/4	1/4	3/8
K	1/4	1/4	5/16
L	1/2	1/2	1/2
M	1/4 - 28	1/4 - 28	5/16 - 24
R	9/16	9/16	5/8
S	3/4	1	1 3/8
T	3/4	3/4	3/4

Note:

FOR SERIES MTM & MSM DOUBLE-ACTING: A + STROKE
 FOR SERIES MTMR & MSMR SPRING RETURN: A + (STROKE X 2)
 FOR SERIES MTMR & MSMR UP TO 1/2" STROKE SPRING RETURN: A + (STROKE + 1")

For cylinders with bumpers, contact factory for stock stroke sizes and add 1/2" to Dimension "A" for each bumper. For cylinders with switches, contact factory for number of switches each stock stroke size can accommodate.

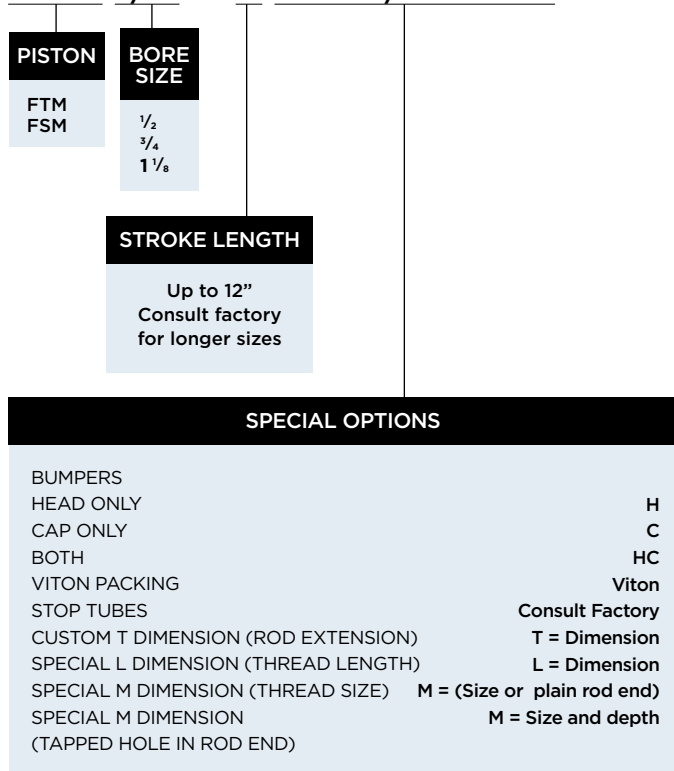
MINIATURE (DIGIT-AIR) CYLINDERS



Series MTM, MSM, MTMR, MSMR, FTM, FSM, FTMR & FSMR

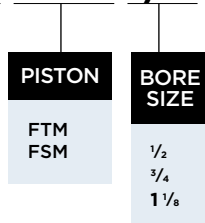
Ordering Information

FTM 1/2 X 3 T=5 1/2 H NT



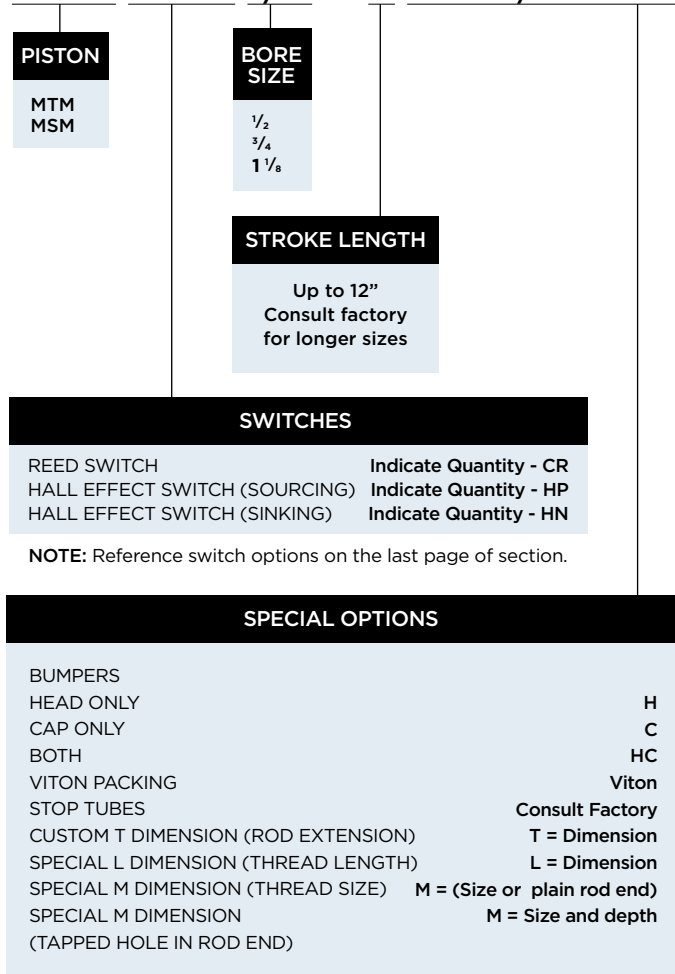
Replacement Parts

PK KIT FTM 1/2



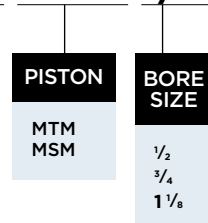
Ordering Information

MTM 2-CR 1/2 X 3 T=5 1/2 H NT



Replacement Parts

PK KIT MTM 1/2



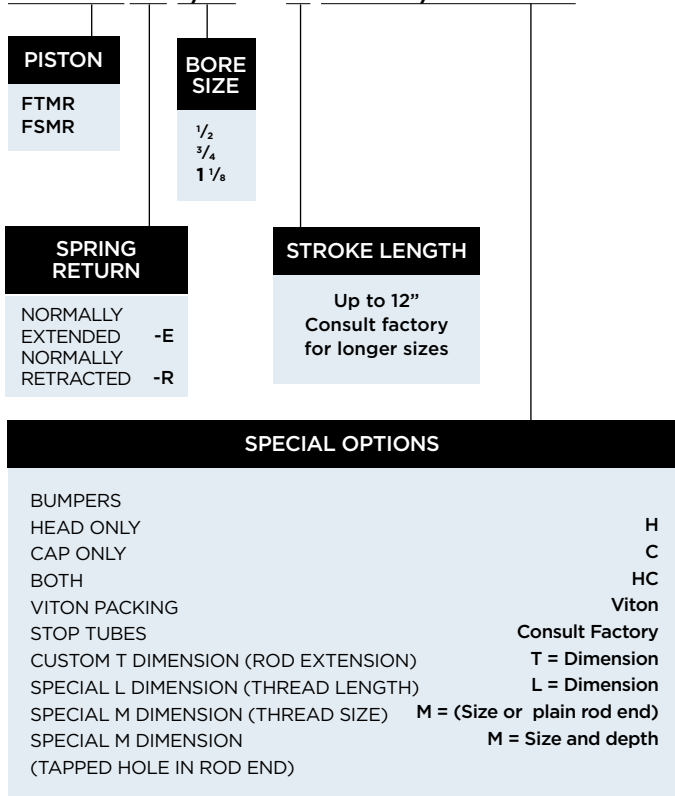
MINIATURE (DIGIT-AIR) CYLINDERS



Series MTM, MSM, MTMR, MSMR, FTM, FSM, FTMR & FSMR

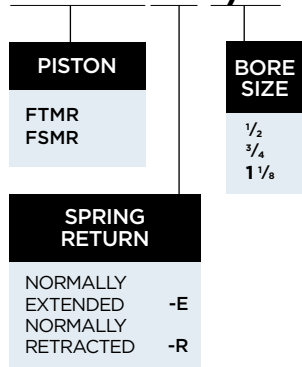
Ordering Information

FTMR-E 1/2 X 3 T=5 1/2 H NT



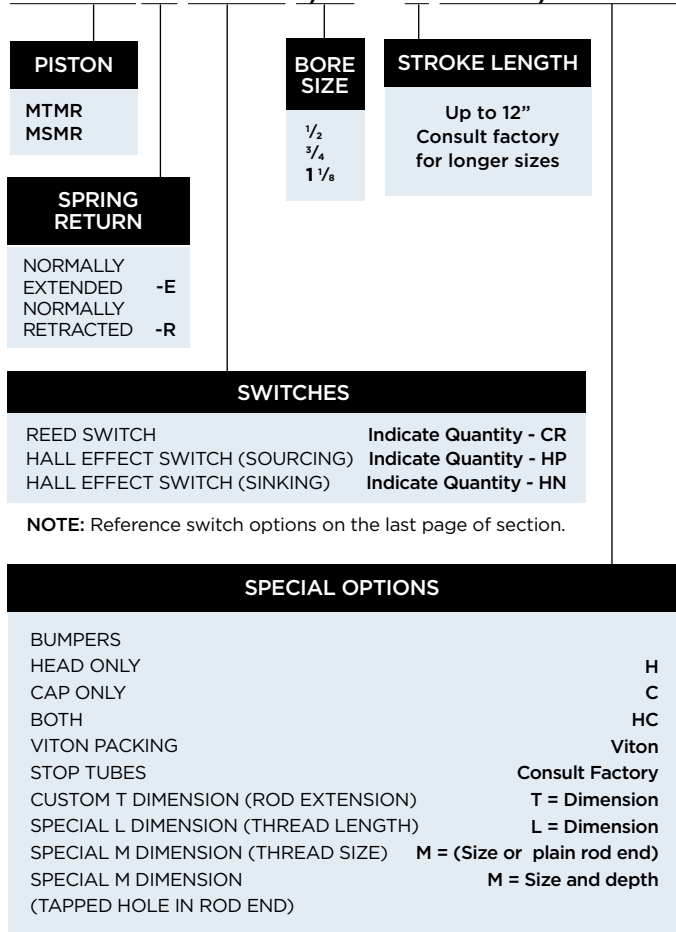
Replacement Parts

PK KIT FTMR-E 1/2



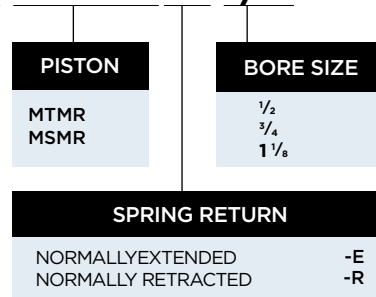
Ordering Information

MTMR-E 2-CR 1/2 X 3 T=5 1/2 H NT



Replacement Parts

PK KIT MTMR-E 1/2



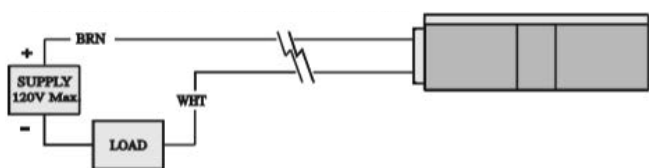
MINIATURE (DIGIT-AIR) CYLINDERS



Series MTM, MSM, MTMR, MSMR, FTM, FSM, FTMR & FSMR

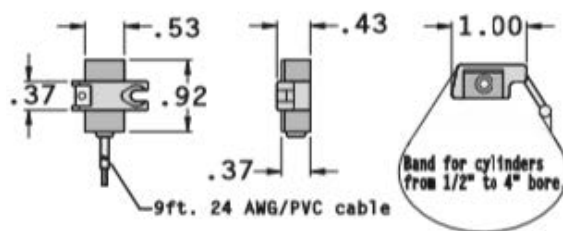
Series MTM, MSM, MTMR & MSMR Magnetic Switch Options:

REED SWITCH: PART NO. 43-CR

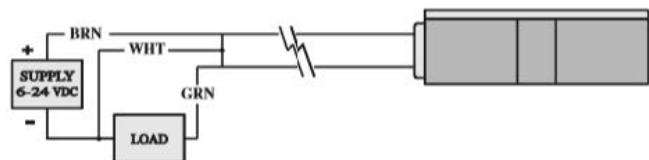


WARNING: DO NOT EXCEED RATINGS.
Permanent damage to sensor may occur.

MOUNTING BAND - Included with Switches

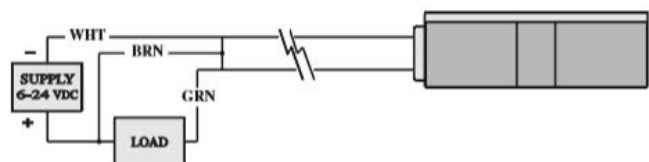


HALL EFFECT SWITCH - SOURCING PART NO. 43-HP



WARNING: DO NOT EXCEED 24 VDC.
Permanent damage to sensor may occur.

HALL EFFECT SWITCH - SINKING PART NO. 43-HN



WARNING: DO NOT EXCEED 24 VDC.
Permanent damage to sensor may occur.

SENSOR TYPES & TECHNICAL DATA

PART NO.	43-CR	43-HP	43-HN
Description	Reed Switch MOV, LED	Half Effect, LED, Sourcing	Half Effect, LED, Sinking
Function	SPTS Normally Open	Normally Open PNP Output	Normally Open NPN Output
Switching Voltage	5 - 120 VDC/VAC 50/60 Hz	6 - 24 VDC	6 - 24 VDC
Switching Current	0.5 Amp Max 0.005 Amp Min	0.5 Amp Max	0.5 Amp Max
Switching Power	10 Watts Max	2 Watts Max	2 Watts Max
Switching Speed	0.5ms operate 0.1ms release	1.5p operate 0.5p release	1.5p operate 0.5p release
Max Volt Drop	3.5 Volts	0.5 Volts	0.5 Volts
Sensitivity	85 Gauss	85 Gauss	85 Gauss