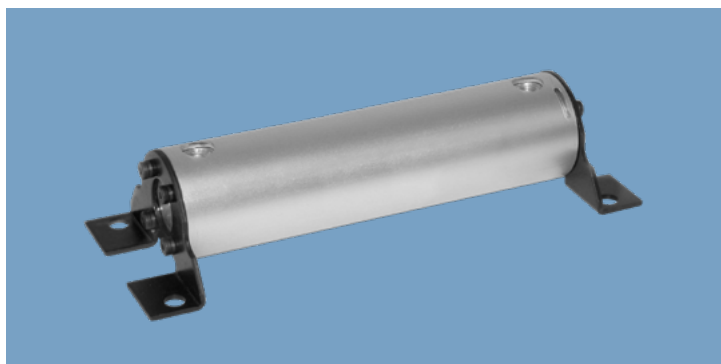


# VOLUME CHAMBERS

**FLAIRLINE**



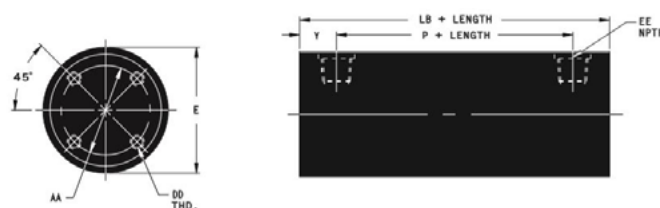
## Operating Specifications

- Standard Bore Sizes: 1 1/2", 2, 2 1/2", 3 1/4", 4
- Maximum Pressure:  
Pneumatic: 150 psi  
Hydraulic: 200 psi
- Barrels are hard-anodized for corrosion resistance

## Features

- Constructed of lightweight aluminum caps and barrels
- Optional mountings are NFPA interchangeable and are made of anodized aluminum or oxidized steel

## Dimensional Data



## Volume Data

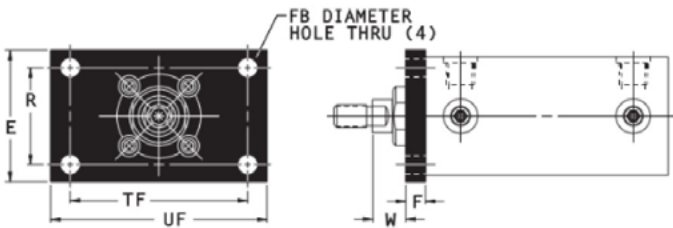
BORE SIZE	CAPACITY	
	BASIC VOLUME (Add to total)	Add per 1.0 inch of length
1 1/2	1.95 IN <sup>3</sup>	1.77 IN <sup>3</sup>
2	3.35 IN <sup>3</sup>	3.14 IN <sup>3</sup>
2 1/2	4.14 IN <sup>3</sup>	4.91 IN <sup>3</sup>
3 1/4	8.45 IN <sup>3</sup>	8.30 IN <sup>3</sup>
4	11.29 IN <sup>3</sup>	12.57 IN <sup>3</sup>

BORE SIZE	DIMENSIONS						
	AA	E	DD	EE	LB	P	Y
1 1/2	1.21	1 3/4	#6 - 32X 1/2	1/4 - 18	3 5/8	2.29	.67
2	1.60	2 1/4	1/4 - 20X 5/8	1/4 - 18	3 5/8	2.29	.67
2 1/2	2.00	2 3/4	5/16 - 18X 3/4	1/4 - 18	3 3/4	2.42	.67
3 1/4	2.62	3 1/2	3/8 - 16X 7/8	1/2 - 14	4 1/2	2.44	.91
4	2.62	4 1/4	3/8 - 16X 7/8	1/2 - 14	4 1/4	2.44	.91

# VOLUME CHAMBERS

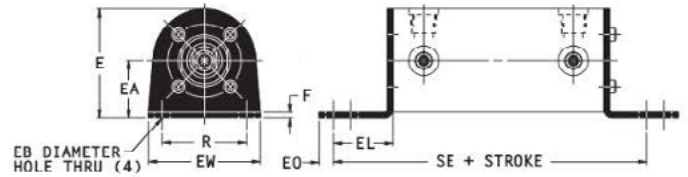
FLAIRLINE

## MOUNTING STYLES



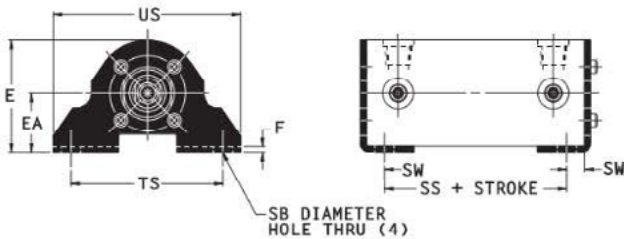
Front Flange Mount (NFFPA MF1)

BORE SIZE	DIMENSIONS						
	E	F	FB	R	TF	UF	W
1 1/2	2	3/8	9/32	1.43	2.75	3 3/8	5/8
2	2 1/2	3/8	11/32	1.84	3.38	4 1/8	5/8
2 1/2	3	3/8	11/32	2.19	3.88	4 5/8	5/8
3 1/4	3 3/4	5/8	13/32	2.76	4.69	5 1/2	3/4
4	4 1/2	5/8	13/32	3.32	5.44	6 1/4	3/4



End Lug Mounts (NFFPA MS7)

BORE SIZE	DIMENSIONS									
	E	EA	EB	EL	EO	EW	F	R	SE	XE
1 1/2	1 7/8	1	9/32	1 1/8	1/4	2	1/8	1.43	5 1/2	5 3/8
2	2 3/8	1 1/4	11/32	1 5/16	5/16	2 7/16	1/8	1.84	5 7/8	5 9/16
2 1/2	2 7/8	1 1/2	11/32	1 7/16	7/16	3	3/16	2.19	6 1/4	6 13/16
3 1/4	3 5/8	1 7/8	13/32	1 1/2	3/8	3 1/2	1/4	2.76	6 5/8	6 1/2
4	4 3/8	2 1/4	13/32	1 5/8	3/8	4 1/4	5/16	3.32	6 7/8	6 5/8



Side Lug Mounts (NFFPA MS2)

BORE SIZE	DIMENSIONS									
	E	EA	F	SB	SS	SW	TS	US	XS	ZB
1 1/2	1 7/8	1	1/8	13/32	2 7/8	3/8	2 3/4	3 1/2	1 3/8	4.92
2	2 3/8	1 1/4	1/8	13/32	2 7/8	3/8	3 1/4	4	1 3/8	4.95
2 1/2	2 7/8	1 1/2	3/16	13/32	3	3/8	3 3/4	4 1/2	1 3/8	5.19
3 1/4	3 5/8	1 7/8	1/4	17/32	3 1/4	1/2	4 3/4	5 3/4	1 7/8	6.19
4	4 3/8	2 1/4	5/16	17/32	3 1/4	1/2	5 1/2	6 1/2	1 7/8	6.25

## Ordering Information

VC 2 10 MF1

BORE SIZE

1 1/2  
2  
2 1/2  
3 1/4  
4

MOUNTING OPTIONS

FRONT FLANGE MOUNT MF1  
SIDE LUG MOUNT MS2  
END LUG MOUNT MS7

STROKE LENGTH

Any length in inch increments or fraction thereof up to and including 130"