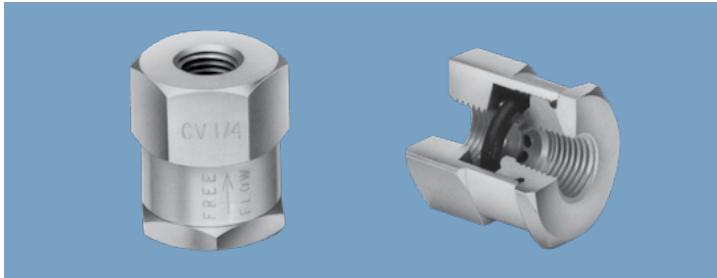


# CHECK VALVES

**FLAIRLINE**



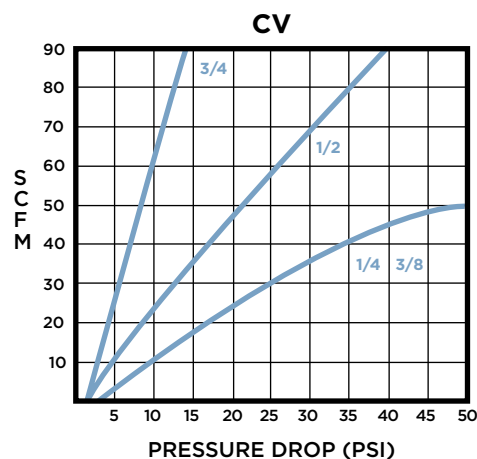
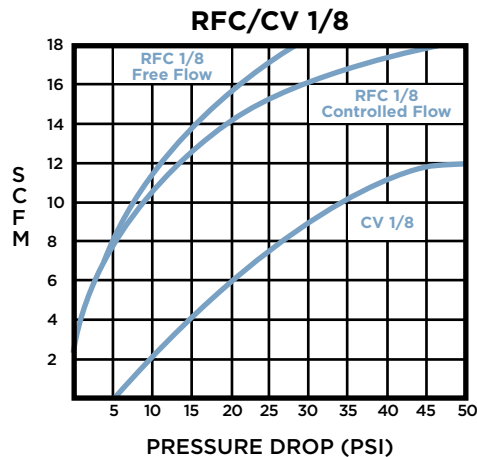
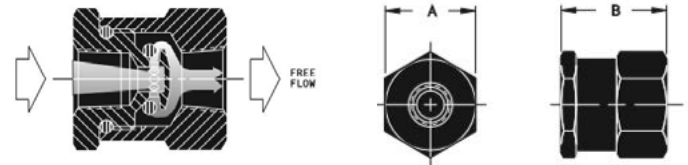
## Operating Specifications

- Standard pipe sizes: 1/8", 1/4", 3/8", 1/2", 3/4"
- Operating pressure: 250 psi
- Orifices available for fixed flow control applications
- Operating temperature range: -40°F - 225°F
- Standard valve body material: Aluminum
- Standard needle material: Brass
- Standard swivel connector material: Black oxidized steel

## Features

- Quick to open, quick to close
- Dilating O-ring as the only moving part
- 'Out-flows' the competition
- Bubble-tight sealing
- Last millions of cycles (factory tests to 50 million cycles show no discernible wear)

## Dimensional Data



Model No.	Pipe Thread	A	B
CV - 1/8	1/8 - 27	3/4	15/16
CV - 1/4	1/4 - 18	1 1/8	1 5/16
CV - 3/8	3/8 - 18	1 1/8	1 5/16
CV - 1/2	1/2 - 14	1 5/8	1 9/16
CV - 3/4	3/4 - 14	1 7/8	2 5/16

## Ordering Information

**CV 1/2 031 V**

**PIPE SIZE**

1/8  
1/4  
3/8  
1/2  
3/4

**SEALS**

BUNA-N Standard  
FLOUROCARBON V

**OPTIONS**

1/32 ORIFICE 031  
1/16 ORIFICE 063  
3/32 ORIFICE 094  
1/8 ORIFICE 125